

# SALEM VILLA

FOREST RIVER

# SALEM GRAND VILLA

FOREST RIVER



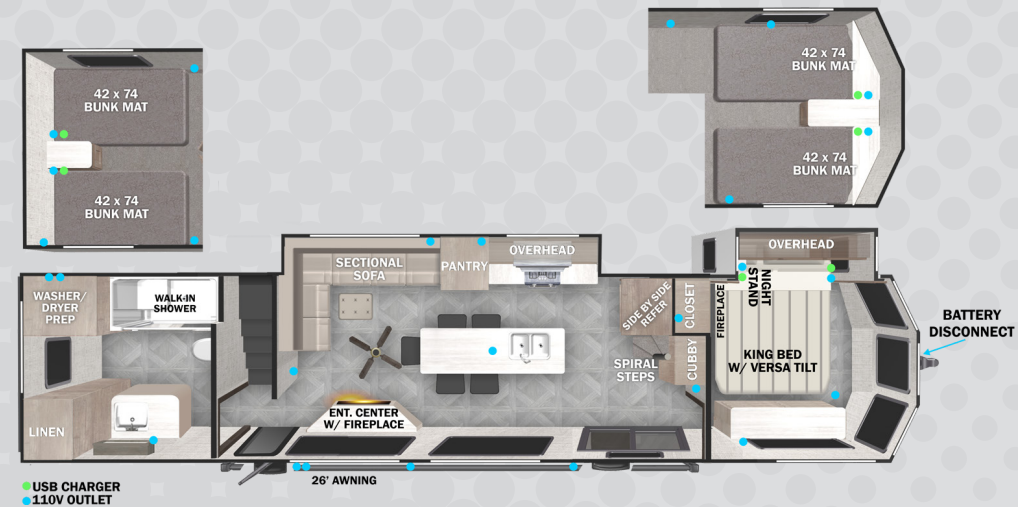
**42DL** HITCH: 1,855 UVW: 12,719 LBS LENGTH: 41'10"



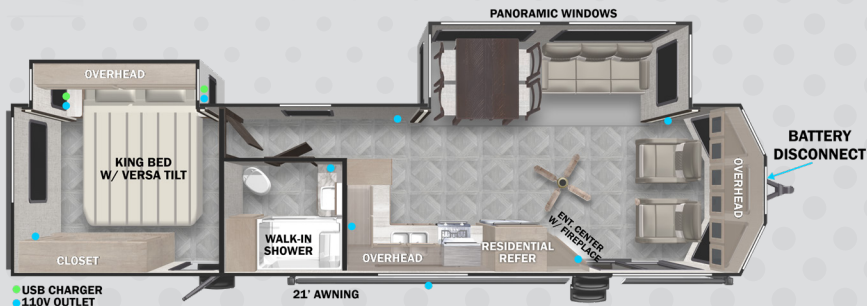
**42FK** HITCH: 1,780 UVW: 12,469 LBS LENGTH: 42'11"



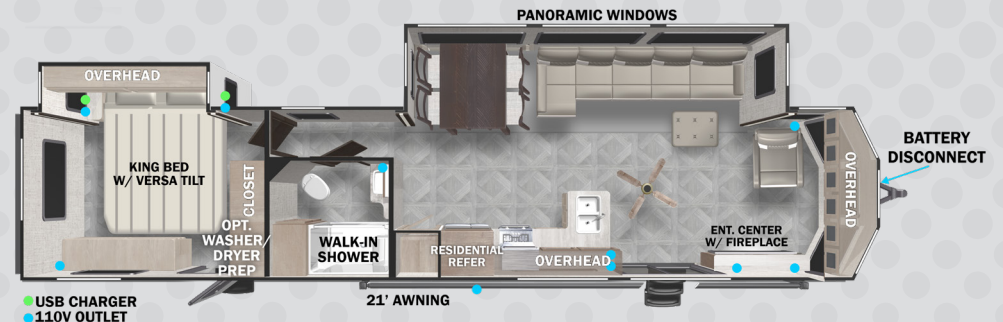
**42FLDL** HITCH: 1,720 UVW: 12,209 LBS LENGTH: 41'7"



**42VIEW** HITCH: 1,745 UVW: 13,749 LBS LENGTH: 45'0"



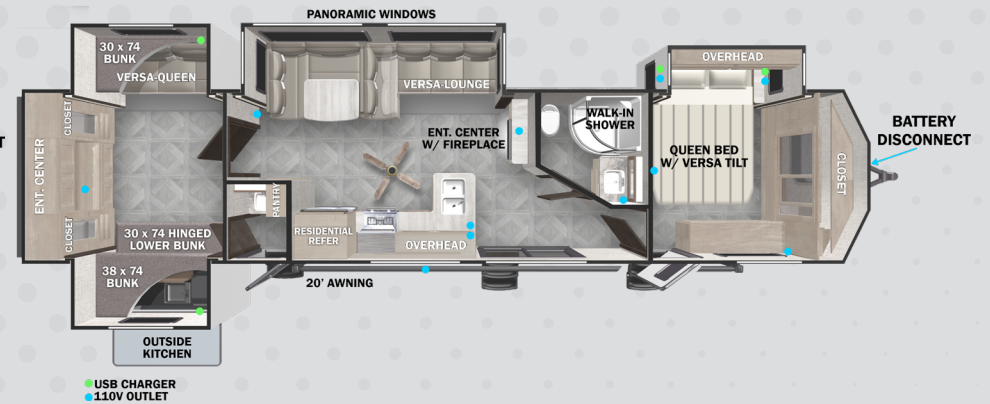
**353FLFB** HITCH: 1,335 UVW: 9,234 LBS LENGTH: 37'9"



**40FDEN** HITCH: 1,260 UVW: 10,574 LBS LENGTH: 42'5"



**40RLB** HITCH: 1,445 UVW: 11,604 LBS LENGTH: 43'0"



**42QBQ** HITCH: 1,365 UVW: 12,029 LBS LENGTH: 42'4"

**FIND ALL OF THE DETAILS**  
 SPECIFICATIONS, VIDEOS AND MORE  
 BY SCANNING THE QR CODE  
 WITH YOUR DEVICE OR VISIT  
[WWW.FORESTRIVERINC.COM/SALEM](http://WWW.FORESTRIVERINC.COM/SALEM)

MEET YOUR SALEM VILLA DEALER

All information contained in this brochure is believed to be accurate at the time of publication. However, during the model year, it may be necessary to make revisions and Forest River, Inc., reserves the right to make all such changes without notice, including prices, colors, materials, equipment and specifications as well as the addition of new models and the discontinuance of models shown in this brochure. Therefore, please consult with your Forest River dealer and confirm the existence of any materials, design or specifications that are material to your purchase decision. © 2023 Salem, a Division of Forest River, Inc., a Berkshire Hathaway company. All Rights Reserved.

