



2024

LE TRAVEL TRAILERS

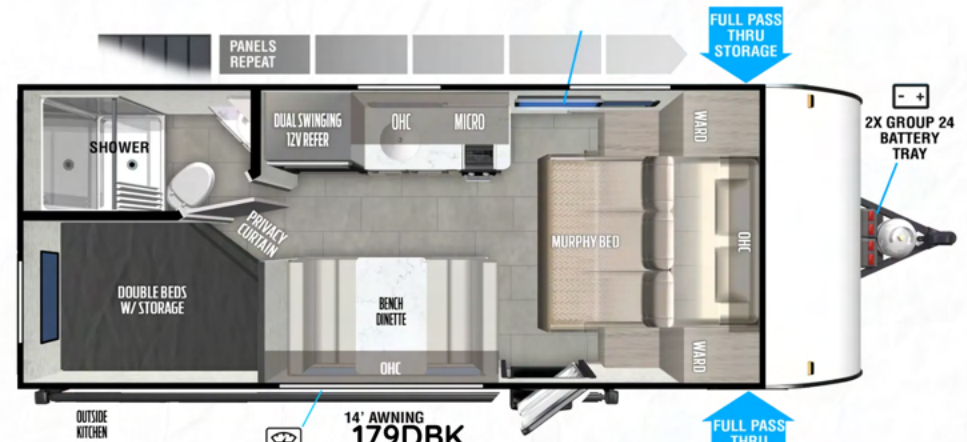
164RBLE
LENGTH: 20' 1"
UVW: 2,819 LBS



174BHLE
LENGTH: 20' 1"
UVW: 2,899 LBS

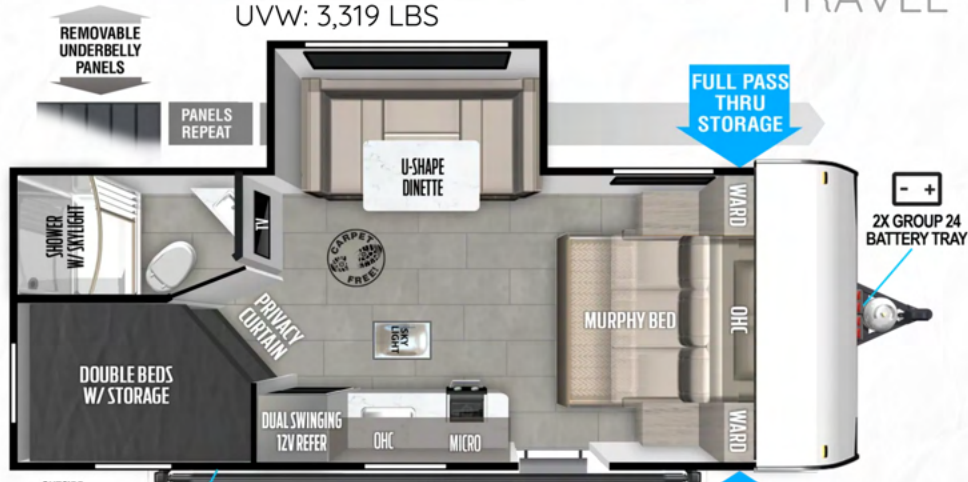


177BH 12' AWNING
LENGTH: 22' 0"
UVW: 3,319 LBS



14' AWNING
179DBK
LENGTH: 22' 6"
UVW: 3,829 LBS

TRAVEL TRAILERS



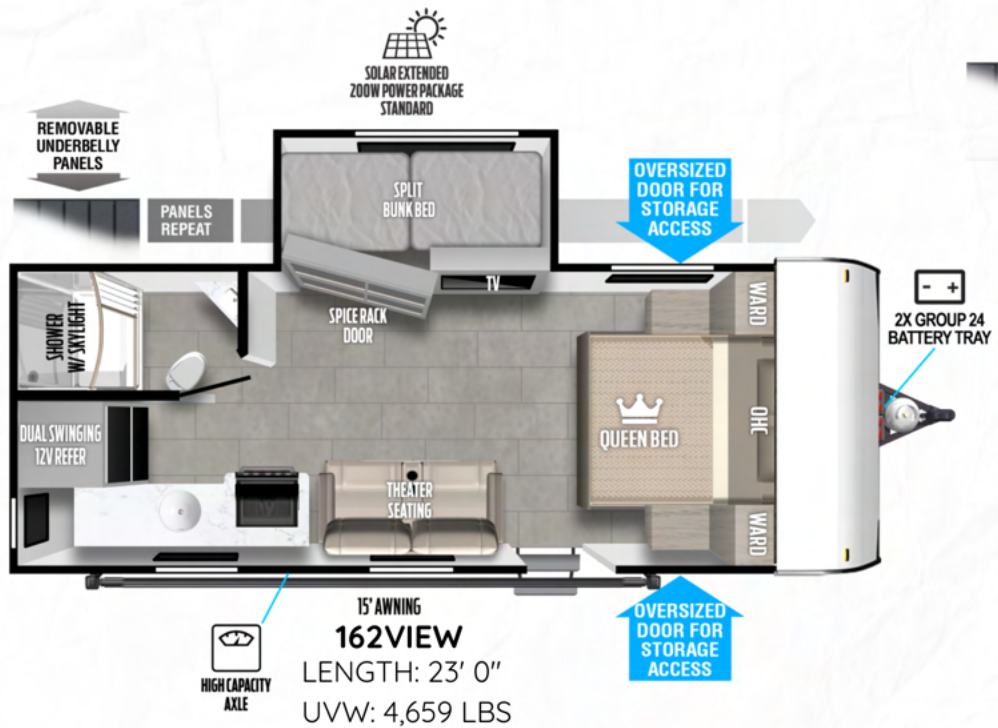
14' AWNING
178BHSK
LENGTH: 22' 11"
UVW: 4,119 LBS



12' AWNING
167RBK
LENGTH: 21' 2"
UVW: 3,651 LBS

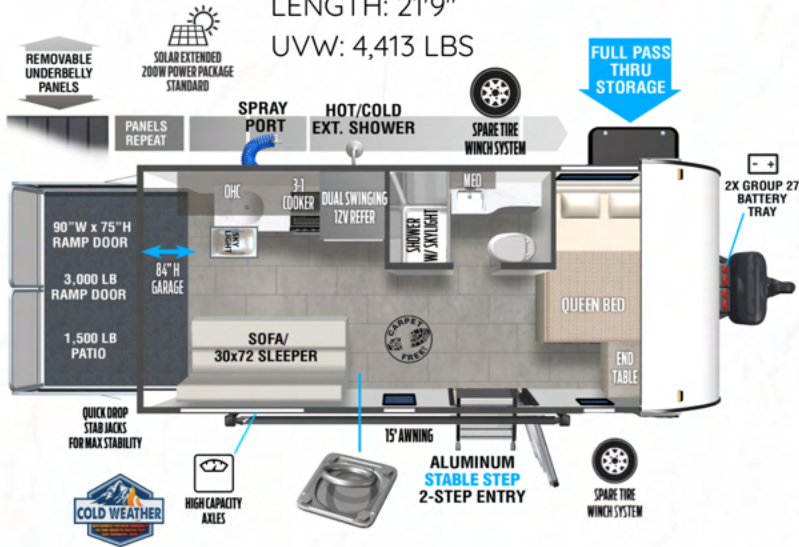


TRAVEL TRAILERS

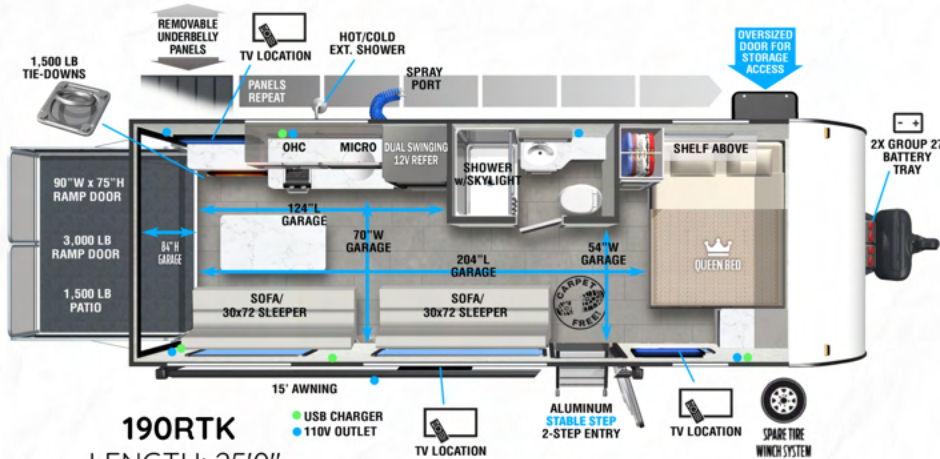
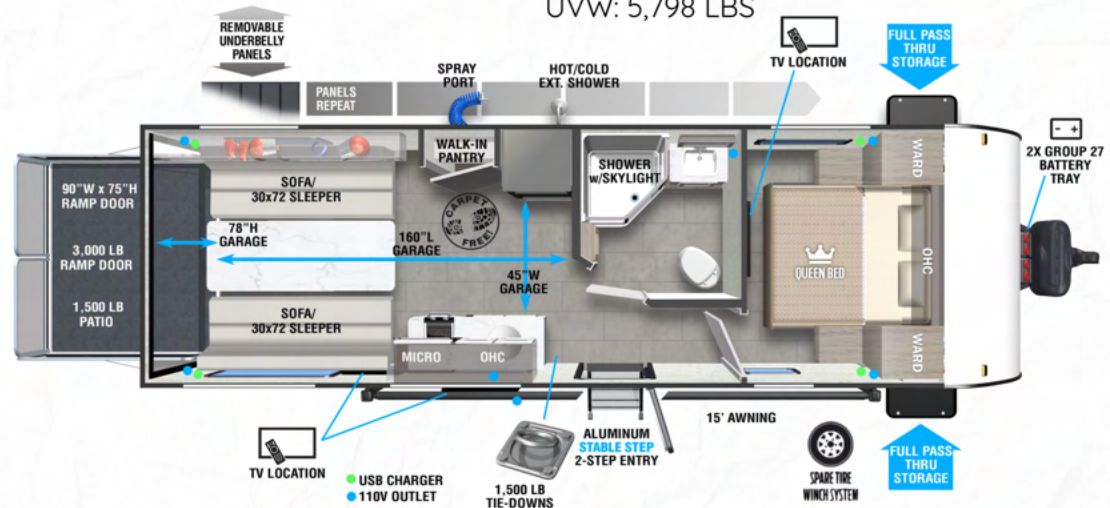


TOY HAULERS + VERSATILE CARGO

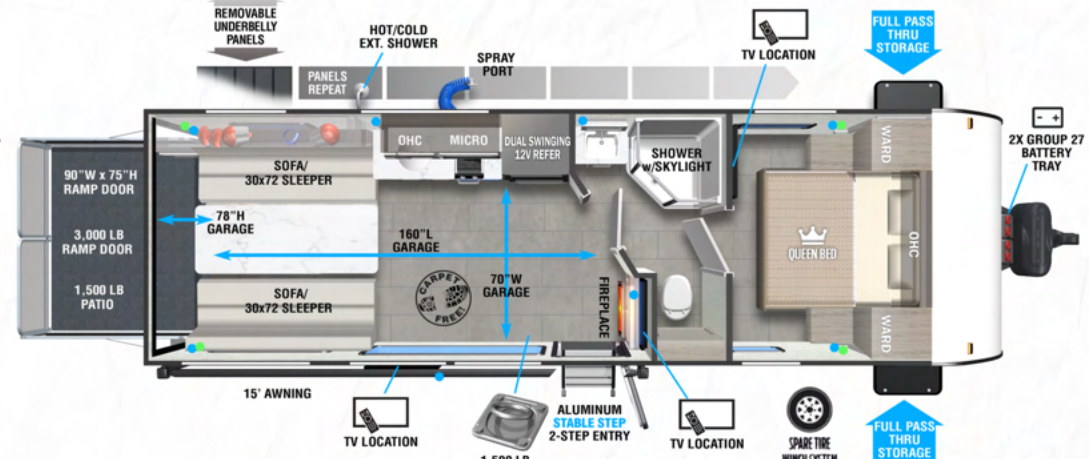
175RTK
LENGTH: 21'9"
UVW: 4,413 LBS



210RTK
LENGTH: 28'8"
UVW: 5,798 LBS



190RTK
LENGTH: 25'0"
UVW: 4,988 LBS



260RTK
LENGTH: 28'8"
UVW: 5,805 LBS



AVAILABLE ON MOST MODELS



270RTK
LENGTH: 32'3"
UVW: 6,318 LBS

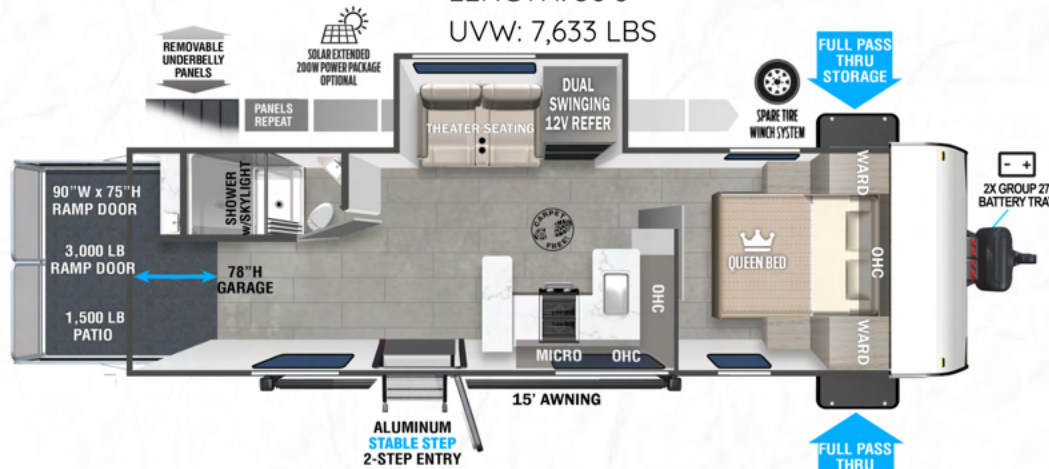


TOY HAULERS + VERSATILE CARGO

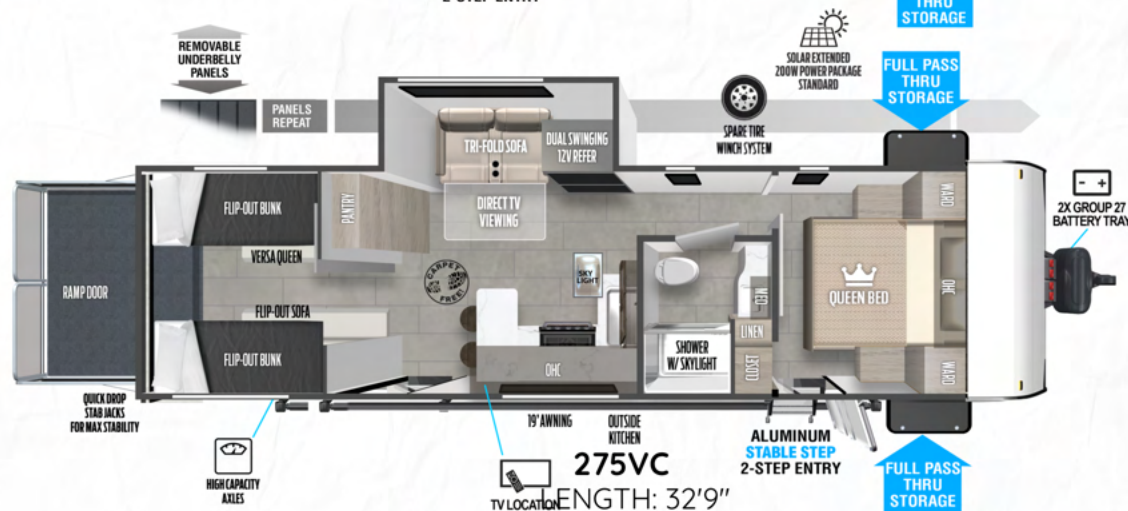
290RTK
 LENGTH: 36'6"
 UVW: 7,2743 LBS



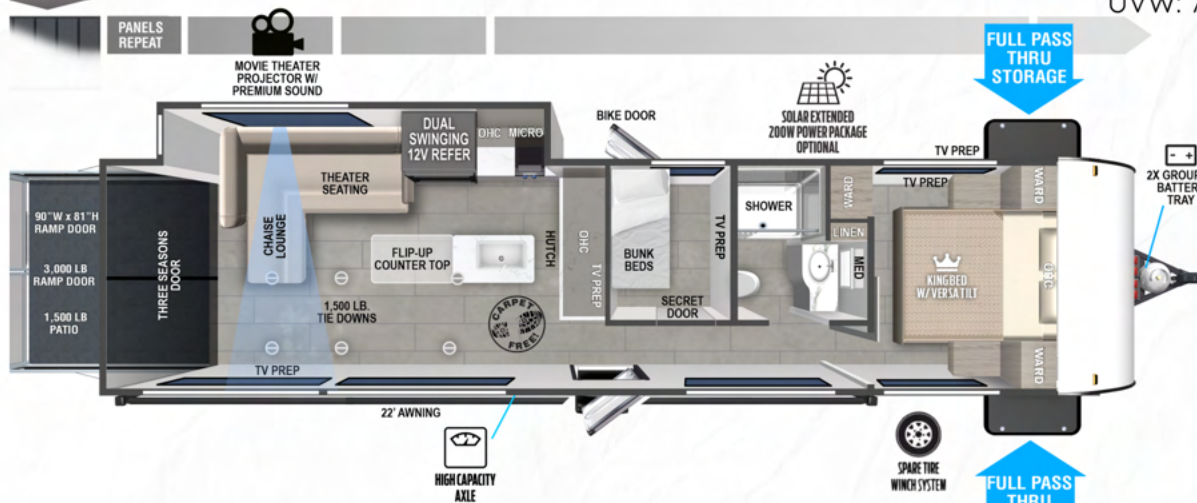
262VC
 LENGTH: 30'6"
 UVW: 7,633 LBS



245VC
 LENGTH: 27'5"
 UVW: 6,208 LBS



275VC
 LENGTH: 32'9"
 UVW: 7,008 LBS



30VCVIEW
 LENGTH: 36'6"
 UVW: 8,585 LBS





For the most recent specs, pictures,
and 360 tours visit
forestriverinc.com/salem-fsx
or
Scan QR Code below



Your Salem Dealer



@salembyforestriver



@SalemRVs

24/7 EMERGENCY
ROADSIDE ASSISTANCE
WITH VEHICLE PURCHASE

TOWING
JUMP STARTS
TIRE CHANGES
FLUID DELIVERY
LOCKOUT
SERVICE

WINCH-OUT
MOBILE MECHANIC
TECHNICAL
SUPPORT
DEALER LOCATOR
SERVICES

**SPECIALIZED
DISPATCH SERVICES**

*VALID FOR 1 YEAR FROM DATE OF PURCHASE

CUSTOMER SATISFACTION

FOREST RIVER
RECOMMENDS YOU TO

BUY LOCAL

PREFERENTIAL SERVICE

PRODUCT INFORMATION

www.ForestRiverBuyLocal.com

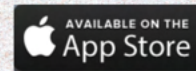
FREE MEMBERSHIP
to Forest River Owners' Group

www.forestriverfrog.com

FOREST RIVER

A Berkshire Hathaway company.

Learn More
Scan this barcode using
a QR Reader on your
smart phone to learn
more about Forest River.



Download the Forest River mobile app or visit our dynamic online manual to enhance your ownership experience. These interactive options provide incredible ease and insight into use, maintenance and enjoyment of your Forest River product. From "How-To" videos, pictures and illustrations of various components, systems and features, to fully searchable content and downloadable PDFs for individual component owner's manuals, answers are always just a click away

PRE-DELIVERY INSPECTION FACILITY

15,000 square feet of quality assurance. We have everything for a premium product. This state-of-the-art facility gives immediate daily feedback to production for quality assurance in every unit built.

UVW (Unloaded Vehicle Weight)* is the typical weight of the unit as manufactured at the factory. It includes all weight at the unit's axle(s) and tongue or pin and LP Gas. The UVW does not include cargo, fresh potable water, additional optional equipment or dealer installed accessories. *Estimated Average based on standard build optional equipment. CCC (Cargo Carrying Capacity) is the amount of weight available for fresh potable water, cargo, additional optional equipment and accessories. CCC is equal to GVWR minus UVW. Available CCC should accommodate fresh potable water (8.3 lbs per gallon). Before filling the fresh water tank, empty the black and gray tanks to provide for more cargo capacity. Estimated average based on standard build optional equipment. See back page for additional specification definitions. GVWR (Gross Vehicle Weight Rating) - is the maximum permissible weight of the unit when fully loaded. It includes all weights, inclusive of all fluids, cargo, optional equipment and accessories. For safety and product performance do NOT exceed the GVWR. GAWR (Gross Axle Weight Rating) is the maximum permissible weight, including cargo, fluids, optional equipment and accessories that can be safely supported by a combination of all axles. Each Forest River RV is weighed at the manufacturing facility prior to shipping. A label identifying the unloaded vehicle weight of the actual unit information contained in this brochure is believed to be accurate at the time of publication. However, during the model year, it may be necessary to make revisions and Forest River, Inc., reserves the right to make all such changes without notice, including prices, colors, materials, equipment and specifications as well as the addition of new models and the discontinuance of models shown in this brochure. Therefore, please consult with your Forest River dealer and confirm the existence of any materials, design or specifications that are material to your purchase decision. © 2023 Ozark, a Division of Forest River, Inc., a Berkshire Hathaway company. All Rights Reserved.