

# VIBE

CAMP ANYWHERE  
PKG



34XL



26RK



26RB



28RL



**CONNECT WITH US**  
PLEASE USE THE CAMERA APP ON YOUR  
PHONE TO SCAN THIS QR CODE  
OR VISIT US AT [FORESTRIVER.COM/VIBE](https://www.forestriver.com/vibe)  
FOR MORE INFO AND SPECIFICATIONS

# STANDARDS & OPTIONS



## EXTERIOR STANDARDS

- Hyper Lyte Construction
- Amazingly Light!!
- Gel Coat Fiberglass w/ Upgraded Graphics Package
- Laminated "Aluma Frame" Sidewalls/ Rearwall/Slideboxes
- 2" Laminated Floor
- 15,000 BTU Ducted A/C IPO 13.5K
- High efficiency A/C Cooling System (Larger Duct Work)
- Cable & Satellite Prep
- Digital TV Antenna w/ Booster
- Extra Large, Aluminum Framed, Pass-thru Storage
- One Touch Electric Awning
- LED Lighted Exterior Speakers (2)
- XL Grab Handle
- Radial Tires Filled w/ Nitrogen
- Heated and Enclosed Underbelly
- Power Stabilizer Jacks
- 2-20 lb. LP Bottles
- 30" Friction Hinge Entry Door
- Outside Kitchen on Select Models
- Aluminum Wheels
- Spare Tire
- Outside shower

## INTERIOR STANDARDS

- Frosted Glass in Kitchen Cabinets
- 3-Burner Cooktop w/ 17" Oven
- Large Single Bowl Stainless Steel Kitchen Sink
- Upgraded 10.7 cu. ft. Residential Refer
- 6 gal. G/E DSI Water Heater
- Dometic Pedal Flush Toilet
- Solid Surface Kitchen Countertops
- Deluxe Wood Booth Table Top
- 80" Interior Height
- Hard Doors To Bedrooms For Privacy (Not Curtains)
- Decorative Kitchen Back Splash
- Large Trash Can w/ Designated Out-of-the-way Area
- Upgraded Residential Style Carpet
- Full Extension Ball Bearing Drawer Guides
- Pot & Pan Storage Under Dinette Seats
- Tri-fold Sofa (Select Models)
- Skylight Over Kitchen
- Skylight Over Tub/Shower
- Theatre Seating (Select Models)

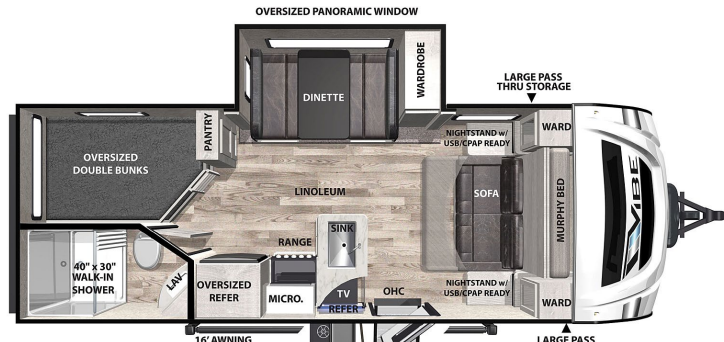
## INFINITY PACKAGE

- Modern Black Chef's Appliance Package
- 50" Entertainment TV's (most models) with built in Soundbar (Includes 2 zones, FM radio, Bluetooth)
- Stainless Steel Roll-up Sink Cover
- Blackout Roller Shades
- Black Tank Flush
- 200w Roof Mounted Solar Panel w/ Battery & Box
- Upgraded Spring Faucet
- Diamond Guard Front Radius
- Mor/ryde Fold Down Solid Step
- LED Awning Light
- Recessed Stove W/ Glass Cover
- New 3/4 Front Fiberglass Cap W/ LED Light
- Teddy Bear Series Bunk Mats (Bunkhouse Models)
- Decorative Window Treatments (Living Room Only)
- Solid Surface Countertops
- Heated Tank Pads

## OPTIONS

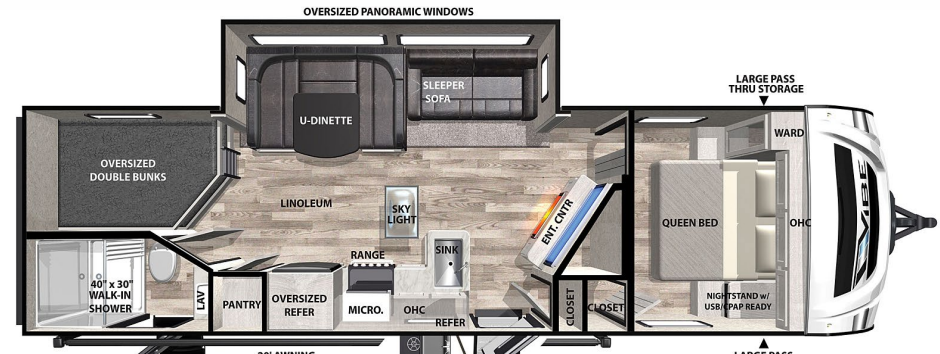
- Free Standing Table w/ 4 Chairs IPO Booth Dinette
- 50 Amp Service w/ Wire & Brace for 2nd A/C
- 2nd 13.5K A/C in Bedroom (Requires 50 Amp)

# BUNK HOUSE MODELS



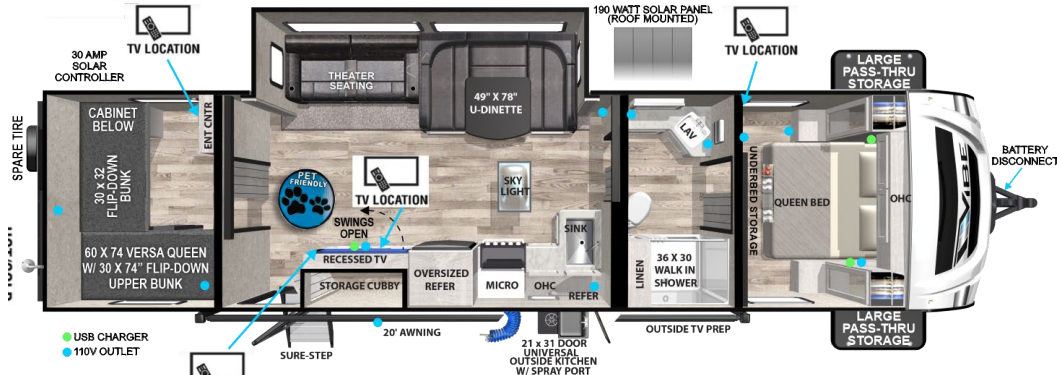
UWV: 5,245 lb.  
EXTERIOR LENGTH: 25' 7"

[CLICK HERE](#) **21BH**



UWV: 6,348 lb.  
EXTERIOR LENGTH: 33' 10"

[CLICK HERE](#) **26BH**

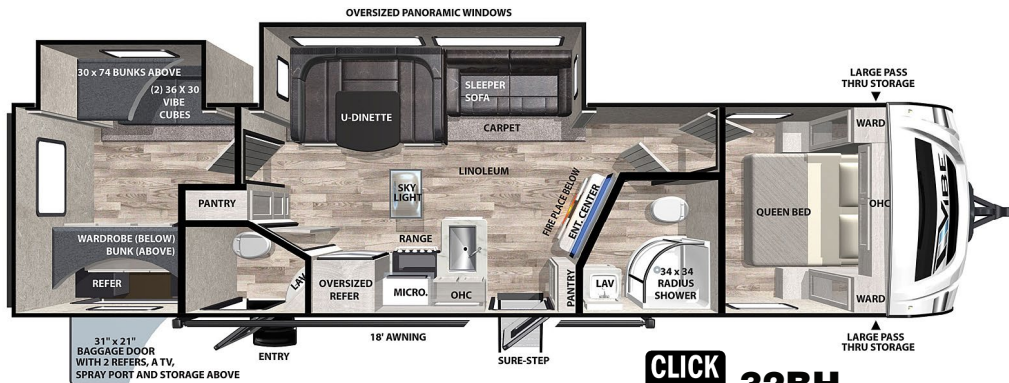


UWV: 7,298 lb.  
EXTERIOR LENGTH: 38'

[CLICK HERE](#) **28BHE**



**28BHE**

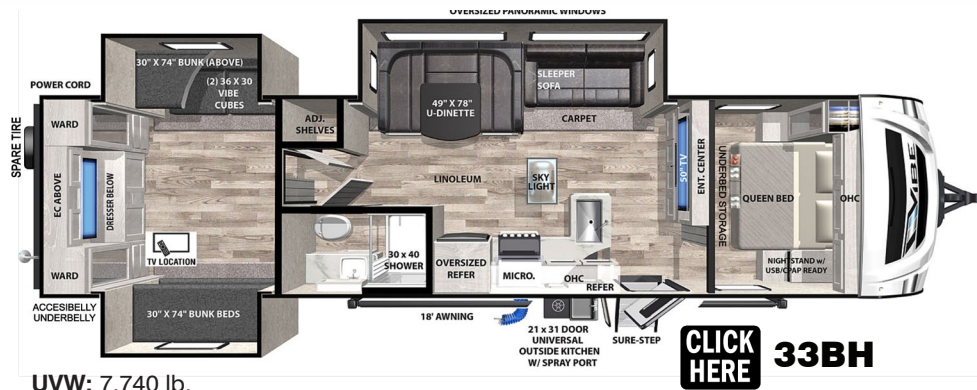


UWV: 7,836 lb.  
EXTERIOR LENGTH: 38'3"

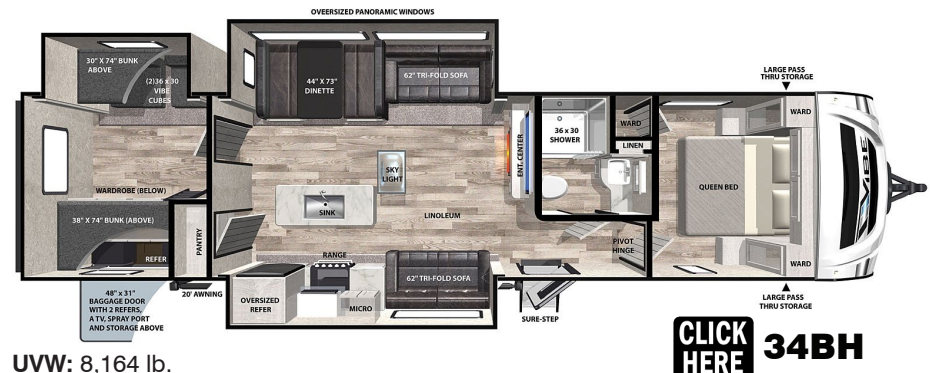
[CLICK HERE](#) **32BH**



**28BHE**



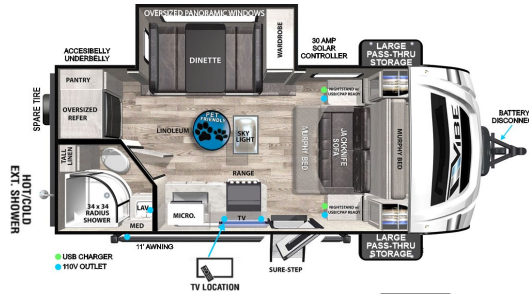
UVW: 7,740 lb.  
EXTERIOR LENGTH: 38' 0"



UVW: 8,164 lb.  
EXTERIOR LENGTH: 39' 5"

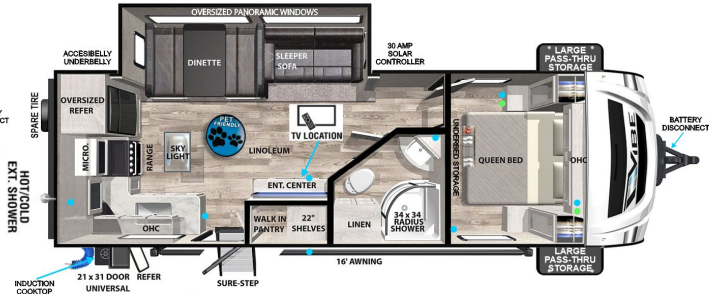


# COUPLES' COACHES



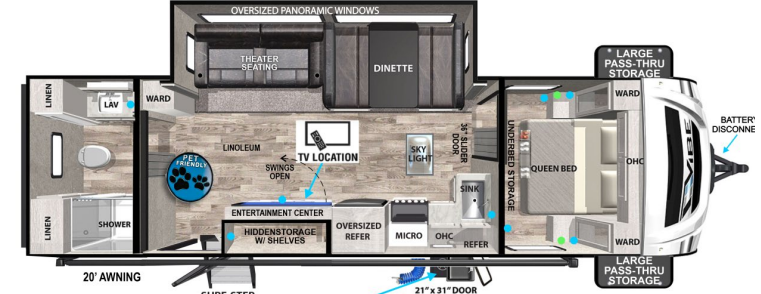
UVW: 4,730 lb.  
EXTERIOR LENGTH: 21' 11"

**CLICK  
HERE  
18RB**



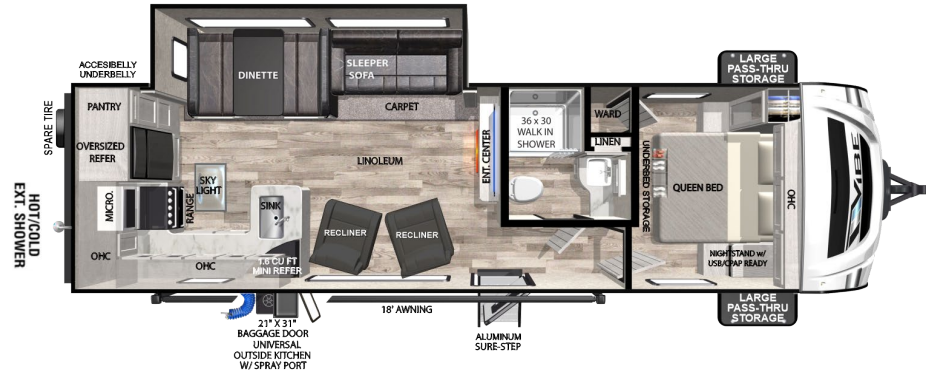
UVW: 5,888 lb.  
EXTERIOR LENGTH: 29' 2"

**CLICK  
HERE  
25RK**



UVW: 6,353 lb.  
EXTERIOR LENGTH: 32'

**CLICK  
HERE  
26RB**



UVW: 6,664 lb.  
EXTERIOR LENGTH: 33' 6"

**CLICK  
HERE  
26RK**



UVW: 7,096 lb.  
EXTERIOR LENGTH: 34' 5"

**CLICK  
HERE  
28RL**



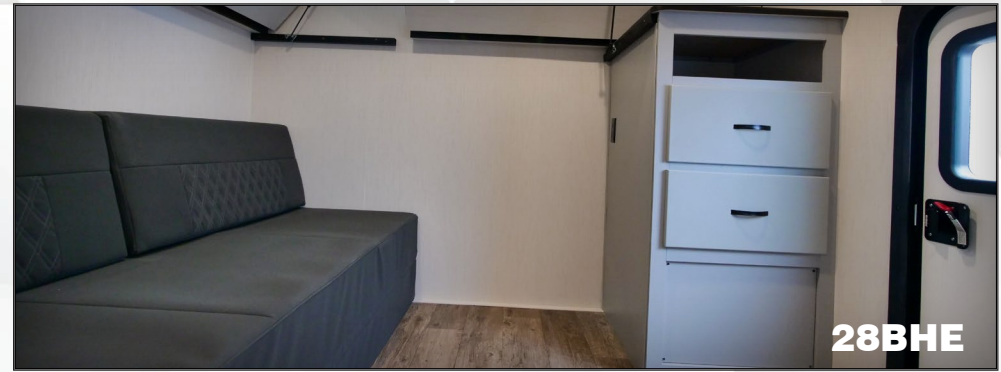
UVW: 7,558 lb.  
EXTERIOR LENGTH: 36' 2"

**CLICK  
HERE  
31ML**



UVW: 8,563 lb.  
EXTERIOR LENGTH: 39' 10"

**CLICK  
HERE  
34XL**



	UVW	HITCH	C.C.C.	LENGTH*	HEIGHT**	CAPACITY(GAL)		
<b>18RB</b>	4,730	503	1,525	21'11"	11'2"	40	30	30
<b>21BH</b>	5,245	636	2,355	25'7"	11'2"	40	60	30
<b>25RK</b>	5,888	805	1,712	29' 2"	11'2"	40	60	30
<b>26BH</b>	6,348	835	1,487	33'10"	11'2"	40	90	30
<b>26RB</b>	6,353	700	1,347	32'	11'2"	40	60	30
<b>26RK</b>	6,664	941	1,277	33'6"	11'2"	40	60	30
<b>28BHE</b>	7,298	910	2,412	38'	11'2"	40	60	30
<b>28RL</b>	7,096	821	2,525	34'5"	11'2"	40	60	30
<b>31ML</b>	7,558	990	2,232	36'2"	11'2"	40	90	30
<b>32BH</b>	7,836	1,074	2,038	38'3"	11'2"	40	60	60
<b>33BH</b>	7,740	936	1,996	38'	11'2"	40	60	30
<b>34BH</b>	8,164	972	1,608	39'5"	11'2"	40	60	30
<b>34XL</b>	8,563	1,070	1,307	39'10"	11'2"	40	79	30

\*Length Coupler to Bumper \*\*Height Top Of A/C

FRESH GRAY BLACK



## FROG™ the Forest River Owners' Group!

**FREE MEMBERSHIP**  
to Forest River Owners' Group



www.forestriverfrog.com

### CUSTOMER SATISFACTION



www.ForestRiverBuyLocal.com

### 24/7 EMERGENCY ROADSIDE ASSISTANCE WITH VEHICLE PURCHASE\*

- |                 |                         |
|-----------------|-------------------------|
| TOWING          | WINCH-OUT               |
| JUMP-STARTS     | MOBILE MECHANIC         |
| TIRE CHANGES    | TECHNICAL SUPPORT       |
| FLUID DELIVERY  | DEALER LOCATOR SERVICES |
| LOCKOUT SERVICE |                         |



\*VALID FOR 1 YEAR FROM DATE OF PURCHASE

### ADDITIONAL SPECIFICATIONS:

**GVWR (Gross Vehicle Weight Rating)** - is the maximum permissible weight of the unit when fully loaded. It includes all weights, inclusive of all fluids, cargo, optional equipment and accessories. For safety and product performance do NOT exceed the GVWR.

**GAWR (Gross Axle Weight Rating)** is the maximum permissible weight, including cargo, fluids, optional equipment and accessories that can be safely supported by a combination of all axles.

Each Forest River RV is weighed at the manufacturing facility prior to shipping. A label identifying the unloaded vehicle weight of the actual unit and the cargo carrying capacity is applied to every Forest River RV prior to leaving our facilities. The load capacity of your unit is designated by weight, not by volume, so you cannot necessarily use all available space when loading your unit.



### PRE-DELIVERY INSPECTION FACILITY

20,000 square feet of quality assurance. The bare essentials for a premium product. This state-of-the-art facility gives immediate daily feedback to production for quality assurance in every unit built.

Download the Forest River mobile app or visit our dynamic online manual to enhance your ownership experience. These interactive options provide incredible ease and insight into use, maintenance and enjoyment of your Forest River product. From "How-To" videos, pictures and illustrations of various components, systems and features, to fully searchable content and downloadable PDFs for individual component owner's manuals, answers are always just a click away.



View the online manual at <https://forestriverinc.com/Owners/Interactive-Manuals> or download our FREE app from the App Store or Google Play!

All information contained in this brochure is believed to be accurate at the time of publication. However, during the model year, it may be necessary to make revisions and Forest River, Inc., reserves the right to make all such changes without notice, including prices, colors, materials, equipment and specifications as well as the addition of new models and the discontinuance of models shown in this brochure. Therefore, please consult with your Forest River, Inc., dealer and confirm the existence of any materials, design or specifications that are material to your purchase decision.

©VIBE, a Division Of Forest River, Inc., a Berkshire Hathaway Company.  
All Rights Reserved.



**Learn More**  
Scan this barcode using a QR Reader on your smart phone to learn more about Forest River.



A Berkshire Hathaway company.

DEALER